

ECDL / ICDL IT Security

Sample Part-Test

The following is a sample part-test for ECDL / ICDL IT Security. This sample part-test contains 18 questions giving a total of 18 marks.

The actual ECDL / ICDL IT Security certification test contains 36 questions giving a total of 36 marks. The candidate has passed the test if he/she scores 27 out of 36 marks. The pass mark for the module is 75%. The duration of the actual ECDL / ICDL IT Security certification test is 45 minutes.

Although the ECDL / ICDL IT Security sample part-test is not a certification test it does give an indication about the scope and approach adopted within the actual ECDL / ICDL IT Security certification test. All test items within the actual ECDL / ICDL IT Security certification tests are based on ECDL / ICDL IT Security Syllabus Version 2.0. For further information about the coverage of Skill Sets and Knowledge Areas in the ECDL / ICDL IT Security tests please refer to ECDL / ICDL IT Security Syllabus Version 2.0 which is available for download at the appropriate section of the Programmes page of www.ecdl.org

Module Goals

ECDL / ICDL IT Security sets out concepts relating to the secure use of ICT in daily life and skills used to maintain a secure network connection, use the Internet safely and securely, and manage data and information appropriately.

Successful candidates will be able to:

- Understand the importance of keeping information and data secure, and identify common data/privacy protection, retention and control principles.
- Recognise threats to personal security from identity theft and potential threats to data from using cloud computing.
- Be able to use passwords and encryption to secure files and data.
- Understand the threat of malware and be able to protect a computer, device or network from malware and address malware attacks.
- Recognise common network and wireless security types and be able to use personal firewalls and personal hotspots.
- Protect a computer or device from unauthorised access and be able to safely manage and update passwords.
- Use appropriate web browser settings and understand how to authenticate websites and browse the web securely.
- Understand communication security issues that can arise from using e-mail, social networks, voice over Internet protocol, instant messaging and mobile devices.
- Back up and restore data to local and cloud storage locations and delete and dispose of data and devices securely.

Sample Part-Test 1

This is a sample part-test.

The following is the sample part-test for ECDL / ICDL IT Security. This test consists of 18 questions with 1 mark available for each question. The total marks available are 18 marks.

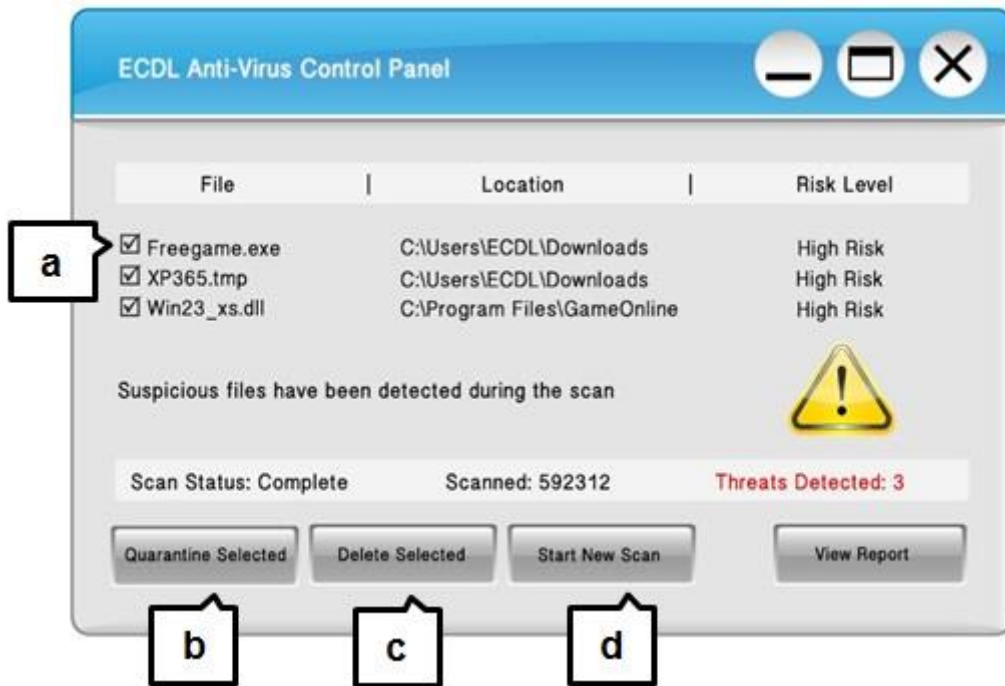
- 1 Which one of the following threats to data is relevant for cloud computing users? [1 mark]
- a. No control of cookies on the hard drive. ☐
 - b. Reduced access to music storage on a mobile device. ☐
 - c. Hacking of data on a USB drive. ☐
 - d. Potential loss of control of online files. ☐
- 2 Which one of the following statements is TRUE in relation to ICT usage policies? [1 mark]
- a. ICT policies are only relevant for financial institutions. ☐
 - b. ICT policies are relevant to all staff. ☐
 - c. ICT policies should only cover Internet usage. ☐
 - d. ICT policies should only cover e-mail etiquette. ☐
- 3 You think that you may have been subject to attempted identity theft. You notice that the card slot of your ATM machine looks unusual. What method of identity theft may have been used? [1 mark]
- a. Phishing. ☐
 - b. Eavesdropping. ☐
 - c. Pretexting. ☐
 - d. Skimming. ☐
- 4 Which one of the following best describes malware? [1 mark]
- a. Software that is used to schedule anti-virus scans on your computer system. ☐
 - b. Software that is used to infiltrate a computer system without the owner's consent. ☐
 - c. Software that is used without a licence. ☐
 - d. Software that is used to control your firewall settings. ☐

Continued...

Sample Part-Test 1 (Contd.)

- 5 Your anti-virus software has alerted you to the presence of some suspicious files on your system. Where would you click to safely manage these files on the system?

[1 mark]



- a. Option a.
b. Option b.
c. Option c.
d. Option d.

- ☐
☐
☐
☐

Continued...

Sample Part-Test 1 (Contd.)

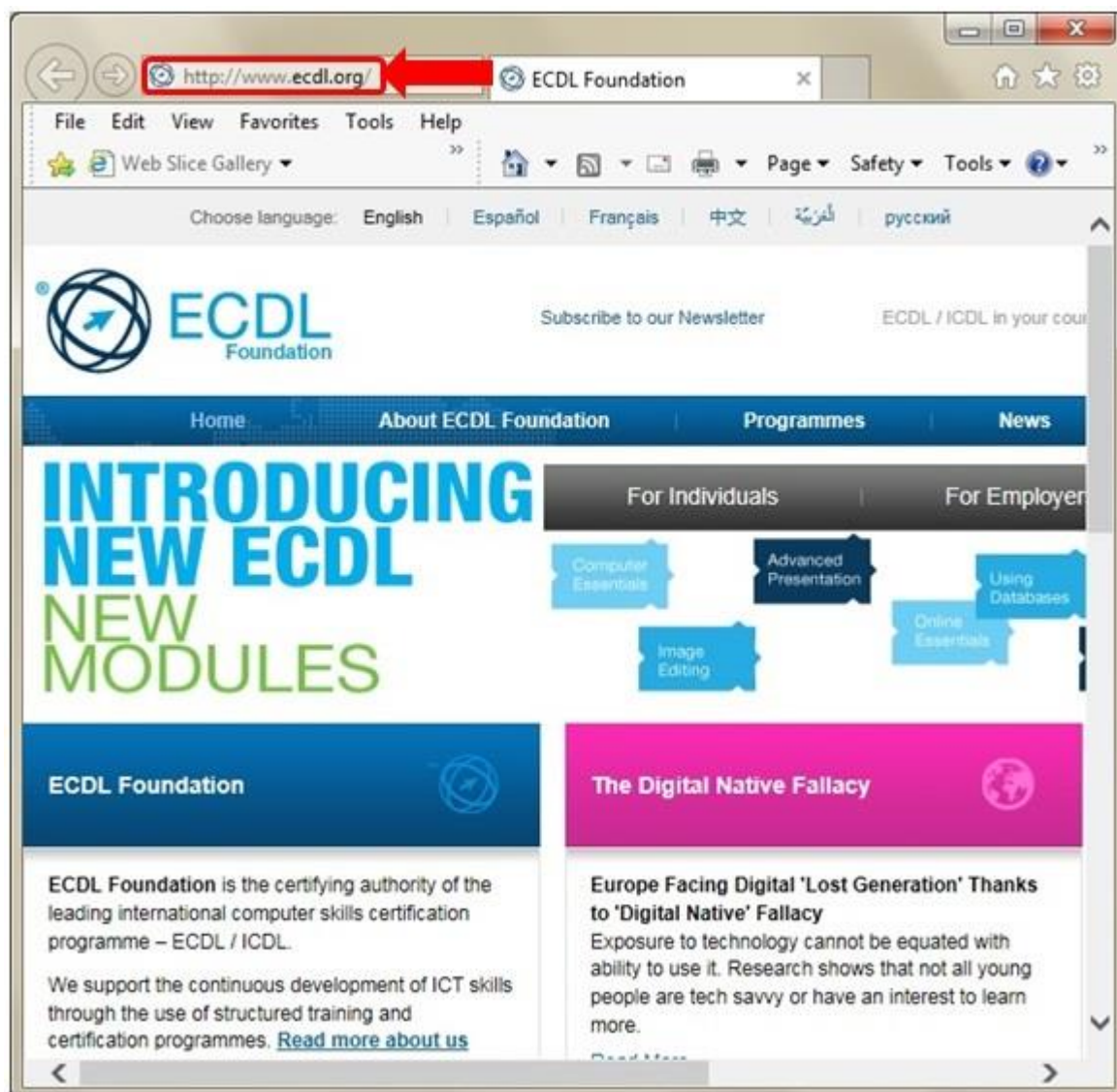
- 6 Which one of the following prevents unauthorised entry to your home network from outside sources? **[1 mark]**
- a. Degaussing. ☐
 - b. Firewalls. ☐
 - c. Phishing. ☐
 - d. Cookies. ☐
- 7 Which one of the following best describes the term personal hotspot? **[1 mark]**
- a. A security technique that uses eye scanning for access control. ☐
 - b. A mobile device feature to share the data connection with other devices. ☐
 - c. An anti-virus software feature to safely handle suspicious files. ☐
 - d. A summary of trending topics in your social media account news feed. ☐
- 8 Which one of the following is a biometric technique for IT security purposes? **[1 mark]**
- a. Keystroke logging. ☐
 - b. Social engineering. ☐
 - c. Face recognition. ☐
 - d. Cable locks. ☐
- 9 Which one of the following passwords is an example of good practice? **[1 mark]**
- a. 12061985 ☐
 - b. password1. ☐
 - c. w1g_w@ms. ☐
 - d. access. ☐

Continued...

Sample Part-Test 1 (Contd.)

- 10 You wish to confirm if this is an authentic website.
Which one of the following ways to confirm the authenticity
of a website is highlighted in the image below?

[1 mark]



- a. Content quality.
- b. Currency.
- c. Security certificate.
- d. Valid URL.

☐

☐

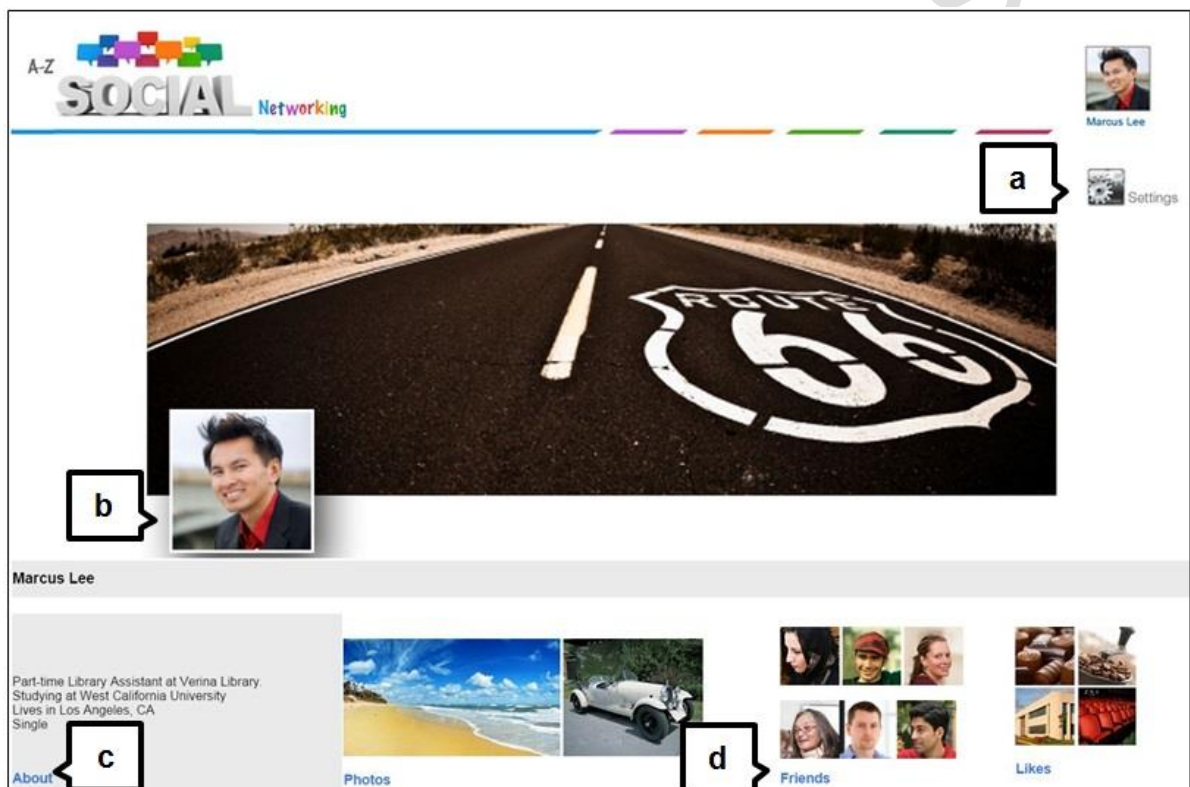
☐

☐

Continued...

Sample Part-Test 1 (Contd.)

- 11 You run a study club where teenage children frequently use a shared PC. You want to restrict the access to websites and length of time spent on the PC. Which one of the following software is most suitable for this purpose? [1 mark]
- a. Adware. ☐
 - b. Spyware. ☐
 - c. Phishing software. ☐
 - d. Content control software. ☐
- 12 Where would you click in the image below if you want to edit options for the account privacy of your posts? [1 mark]

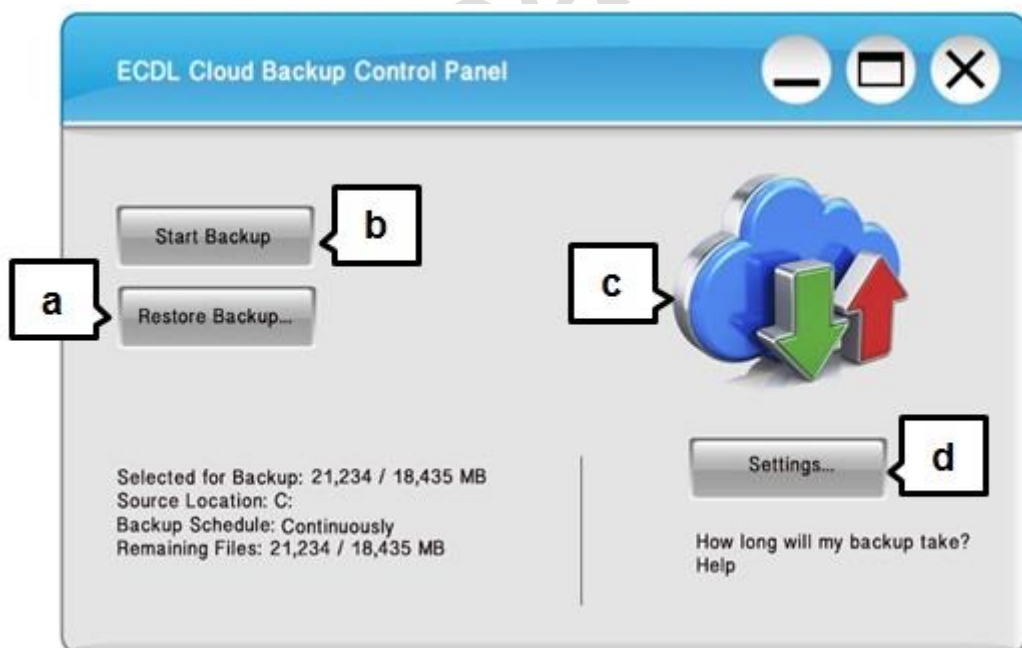


- a. Option a. ☐
- b. Option b. ☐
- c. Option c. ☐
- d. Option d. ☐

Continued...

Sample Part-Test 1 (Contd.)

- 13 Which one of the following best describes requests made by an application during installation to gain access to device data and resources? [1 mark]
- a. Keystroke logging. ☐
 - b. Application backup. ☐
 - c. Data destruction utilities. ☐
 - d. Application permissions. ☐
- 14 Which one of the following will help with data recovery in the event of data loss from a computer? [1 mark]
- a. Internet usage policy. ☐
 - b. Access control policy. ☐
 - c. Internet filtering software. ☐
 - d. A backup procedure. ☐
- 15 You want to ensure you have a complete copy of your **C: drive** data saved to a cloud service. Where would you click in the image below to create this copy of the contents of the **C: drive**? [1 mark]



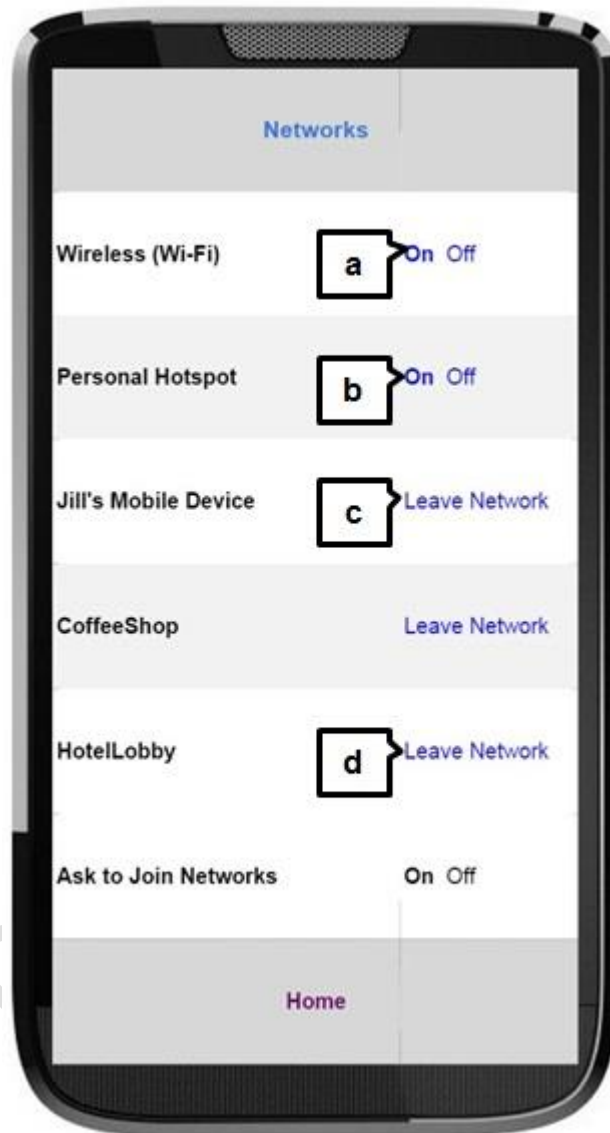
- a. Option a. ☐
- b. Option b. ☐
- c. Option c. ☐
- d. Option d. ☐

Continued...

Sample Part-Test 1 (Contd.)

- 16 Where would you click in the image below to disconnect your mobile device from a secure personal hotspot created by your friend?

[1 mark]



- a. Option a.
- b. Option b.
- c. Option c.
- d. Option d.

☐
☐
☐
☐

Continued...

Sample Part-Test 1 (Contd.)

- 17 Which one of the following is the most important reason for permanently deleting data from a device? **[1 mark]**
- a. To ensure the data cannot be recovered by anyone else. ☐
 - b. To ensure the data can be retrieved from the recycle bin. ☐
 - c. To clean up the contents of the desktop. ☐
 - d. To remove personal data saved by autocomplete. ☐
- 18 Open the file named **expenses.xlsx** from your candidate drive. Set the password Now3acce\$\$ to open the file.
Save and close all open files and close any open applications. **[1 mark]**

This is the end of the test.

If you have time, check the work you have done.